



Claudia Gardens
, Dunstable, LU5 6GY

£1,200 PCM




WATSONS
LETTING SINCE 1961

Claudia Gardens

, Dunstable, LU5 6GY

Watsons are delighted to offer for let this newly decorated and carpeted two bedroom top floor apartment with far reaching views on this modern development. The property provides excellent access to the both A5 and M1 Motorway, and the accommodation comprises: Entrance hallway, lounge / diner with balcony, kitchen (with oven, hob, washing machine and fridge freezer), two bedrooms, bathroom with shower above the bath, and allocated carport plus parking space. Further benefits include gas central heating and double glazing. The property is offered Unfurnished, and is available immediately.

Entrance Hallway

Open Plan Living / Kitchen

24'5 (max) x 17'2 (max) (7.44m (max) x 5.23m (max))

Balcony

Bedroom One

12'11 x 10'11 (3.94m x 3.33m)

Bedroom Two

10'3 x 7'11 (3.12m x 2.41m)

Bathroom

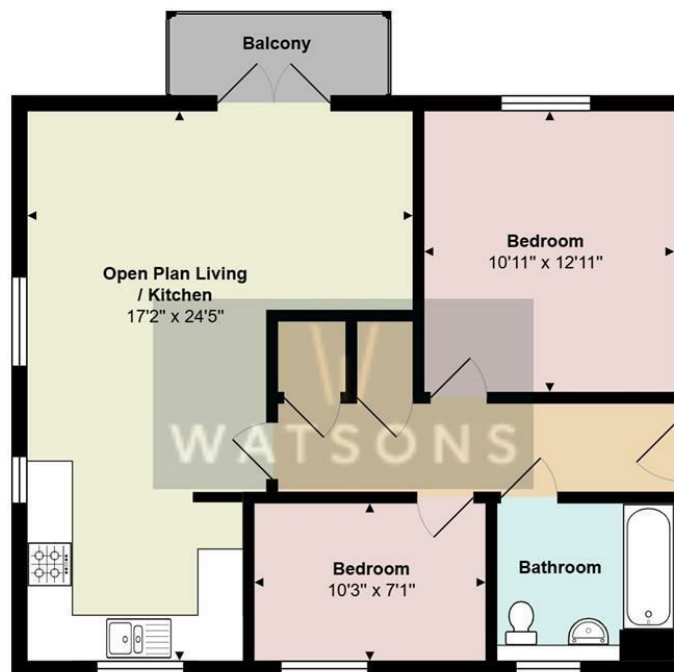
Allocated Carport





Measurements and floor plans are approximate and for guidance only. Any prospective Tenant should check all measurements. Floor plan coverings and fitments are for example only and may not represent the true finish of the property.

Floor Plan



Top Floor

Total Area: 702 ft² (excluding balcony)

All measurements are approximate and for display purposes only

Viewing

Please contact our Watsons Lettings Office on 01525 378309 if you wish to arrange a viewing appointment for this property or require further information.

17 - 21 Ropa Court, Leighton Buzzard, Bedfordshire, LU7 1DU
Tel: 01525 378309 Email: info@watsonslb.co.uk www.watsonslb.co.uk